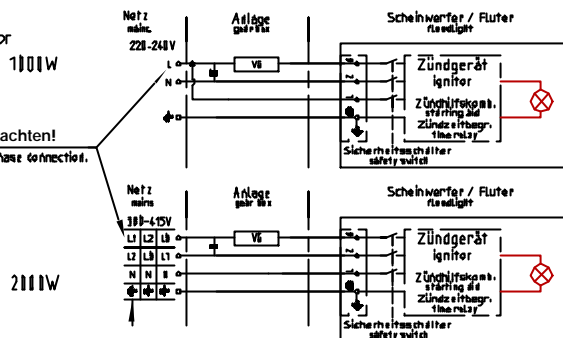


Heißwiderzündung
with hot restrike ignitor



Phasenzuordnung beachten!
Important! ensure correct phase connection.

4. Wartung / Instandhaltung

maintenance and care

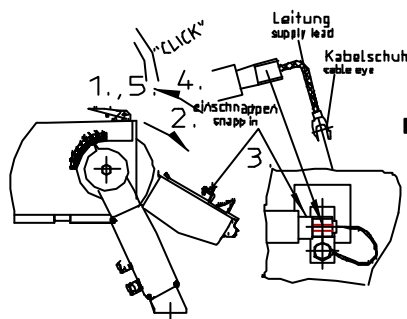


Vor dem Lampenwechsel Stromversorgung unterbrechen.
Interrupt power supply before lamp replacement.

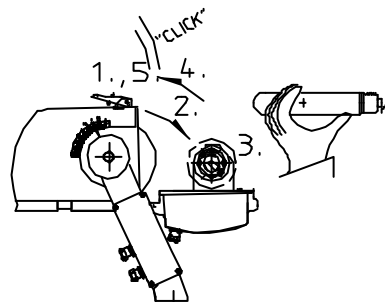


Lampenwechsel - bei HQI-TS Lampen

Lamp replacement - for HQI-TS lamps
Lampe: DSRAM Power Star HQI-TS 1101W/D/S und 2101W/D/S
| HQI = metal halide lamp |



Lampenwechsel - HQI/NAV-T Lampen
lamp replacement - for HQI/NAV-T lamps



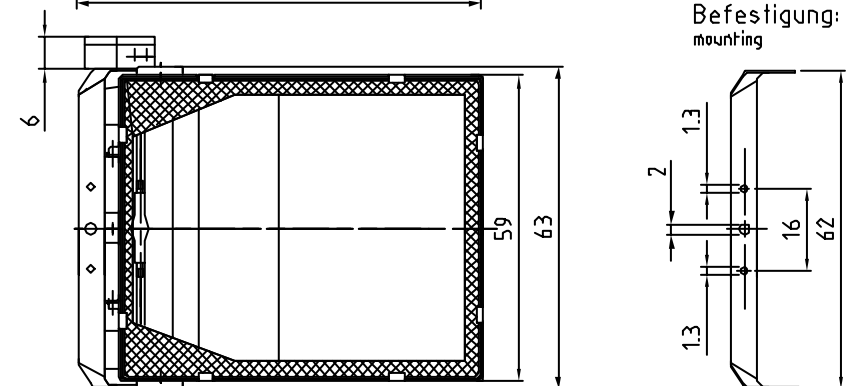
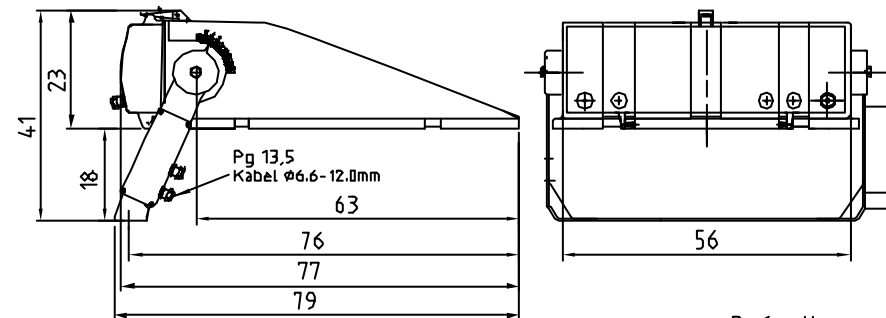
ASYMMETRISCHER FLUTER
ASYMMETRICAL FLOODLIGHT

SICOMPACT A2 MAXI
5NA 759

EN 60598 IP 65

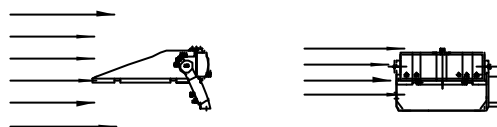
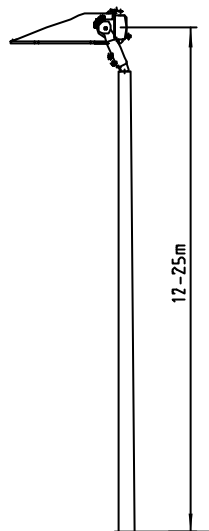
1. Identifikation und Hauptabmessungen

Identification and overall dimensions



Nur 1x Schraube M2 oder 2x Schraube M2
For 1x screw M2 or 2x screw M2

Typ		Gewicht/Weight:
SNA 759 0-1WS01	HIT 2001W/DI//N	21,0 kg
SNA 759 0-1VS01	HIT/HST 1000W	21,0 kg
SNA 759 0-1VS12	HIT-DE 1010W	21,0 kg
SNA 759 0-1WS12	HIT-DE 2100W	21,0 kg
SNA 759 0-1VB12	HIT-DE 1010W	21,0 kg
SNA 759 0-1WB12	HIT-DE 2100W	21,0 kg
SNA 759 1-2TS01	2xHIT/HST 2511/411W	21,0 kg
SNA 759 7-1WS12	HIT-DE1011/2110WHWZ	25,0 kg
SNA 759 7-1WB12	HIT-DE1011/2011WHWZ	25,0 kg

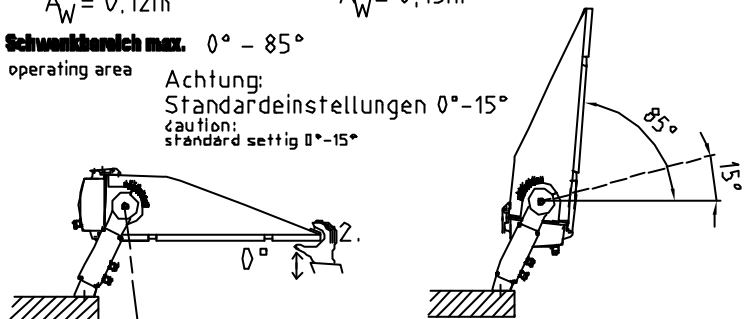


$$A_W = 0,12m^2$$

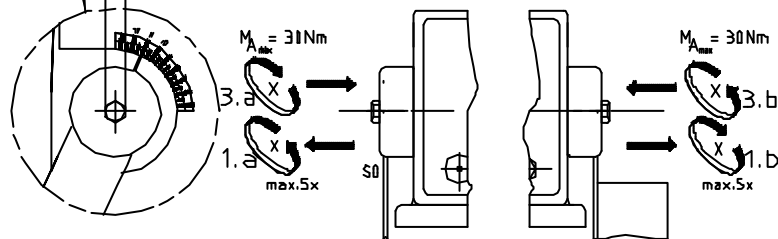
$$A_W = 0,13m^2$$

Schwenkbereich max. 0° - 85°
operating area

Achtung:
Standard-einstellungen 0°-15°
caution:
standard setting 0°-15°

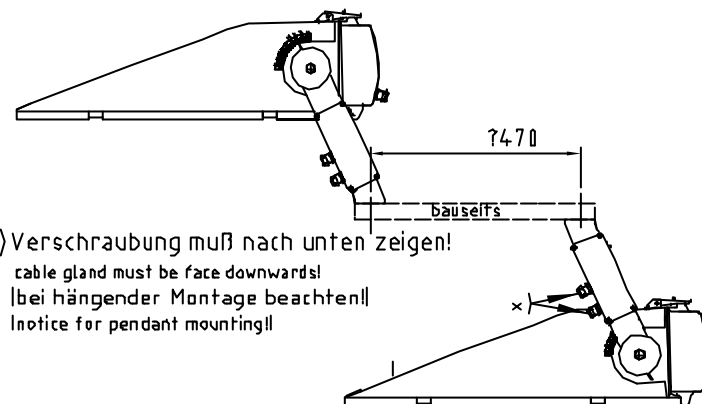


SW 19
A/F 19



2. Vorbereitung zur Montage

installation preparation



x) Verschraubung muß nach unten zeigen!
cable gland must be face downwards!
|bei hängender Montage beachten!|
|notice for pendant mounting!|

3. Elektrischer Anschluß

electrical connection

Empfohlene Querschnitte für Kupferkabel:
recommended cross section for coppercable:

Abstand Leuchte-VG distance between luminaire and ballast	φ
<51m	2,5mm ²
50 - 80m	4,1mm ²
81 - 120m	6,1mm ²

x) Bei Leitungsaußendurchmesser ≥12mm Zwischendose vorsehen!
use transition box if supply cable is ≥12mm in diameter!

Empfohlener Wert für Eingangssicherung: 16A träge bei 1110/2100W
recommended cross section for coppercable: 16A fuse for 1110/2100W

Achtung: Betrieb nur mit externem VG!
important: only for use with external ballast!

Normalzündung

with normal ignitor

