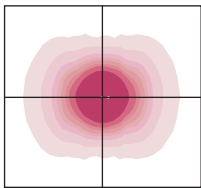


Specification

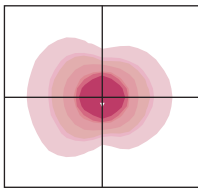
The luminaire shall consist of an extruded and painted aluminium body with injection-moulded polycarbonate end caps housing the gear tray assembly and 2xT5 fluorescent lamps in a choice of wattages. The maximum depth when surface-mounted shall be 73mm and the maximum visible surface when cornice-mounted shall be 180mm. The optic shall consist of a 3mm thick clear polycarbonate diffuser lens with prisms on the internal face. The end caps are bonded to the lens. The diffuser lens assembly is fixed by to the luminaire via six tamper-proof socket head M4 screws. An IP rating of 659 shall be achieved with a die-cut gasket, the impact resistance of the luminaire being a minimum of 50 joules. The luminaire shall be suitable for surface or cornice-mounting with the ability to through-wire for continuous run mounting and shall be designed to EN60598-2-1.

Light Distributions

Symmetric



Asymmetric



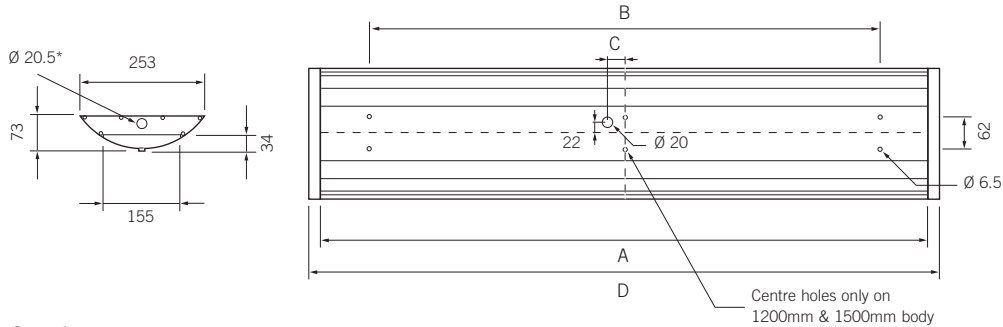
Photometric data is available at www.holophane.co.uk



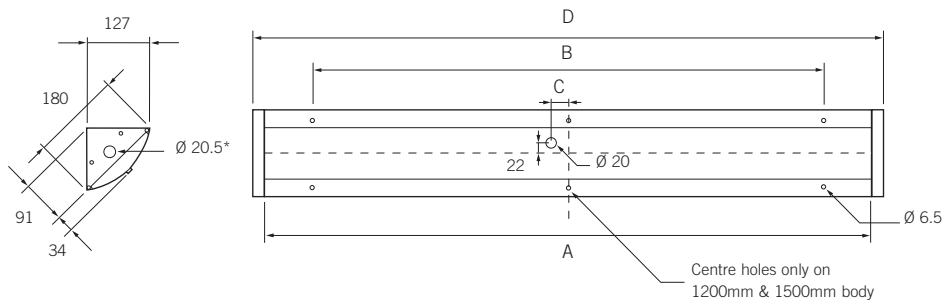
Dimensions (mm)



Surface-mount



Cornice-mount



*Through-wiring hole each end supplied with injection-moulded polycarbonate bung

For surface-mount and cornice-mount options.

Lamp Type	Nominal Length (mm)	A	B	C	D
2 x 24W T5	600	590	400	0	625
2 x 39W T5	900	890	700	0	925
2 x 28W/54W T5	1200	1190	1000	35	1225
2 x 49W T5	1500	1490	1300	35	1525

Weights & Thermal Data

Lamp Type	Mounting	Weight (kg)	Minimum Operating Temperature (°C)	Maximum Operating Temperature (°C)
2 x 24W T5	Surface	3.8	0	40
2 x 24W T5	Cornice	3.2	0	40
2 x 28W T5	Surface	6.6	0	40
2 x 28W T5	Cornice	5.6	0	40
2 x 39W T5	Surface	5.5	0	40
2 x 39W T5	Cornice	4.3	0	40
2 x 49W T5	Surface	8.7*	0	40
2 x 49W T5	Cornice	7.0*	0	40
2 x 54W T5	Surface	6.6	0	20**
2 x 54W T5	Cornice	5.6	0	20**

* For .ME Maintained Emergency option add 0.4kg.

** Only suitable for environments with a maximum ambient temperature of 20°C.